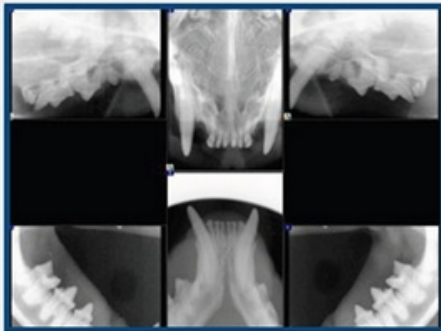


# Why Dental Radiographs?

Dental radiography (or x-ray) is painless, very safe, and noninvasive. It is useful for evaluating tooth roots and surrounding bone.

It may reveal tumors involving the bones of the jaw, tooth impactions, tooth fractures, tooth root abscesses, retained teeth or feline Resorptive lesions.



## TOP SIGNS OF PERIODONTAL DISEASE

- chewing on one side of mouth
- not wanting head touched
- bumps or lumps in mouth
- bleeding or red gums
- tartar on teeth
- loose teeth
- bad breath
- drooling

### Oral Issues Can Lead To

- Gingivitis • Bad Breath • Heart Disease
- Lung Disease • Kidney Disease



**Brockville**  
Animal Hospital

## Office Hours

Monday	8:00am – 9:00pm
Tuesday	8:00am – 9:00pm
Wednesday	8:00am – 9:00pm
Thursday	8:00am – 9:00pm
Friday	8:00am – 5:00pm
Saturday	8:00am – 4:00pm
Sunday	Closed

## Contact Us

Phone: 613-345-3401

Email: [info@brockvillevet.ca](mailto:info@brockvillevet.ca)

[www.brockvillevet.com](http://www.brockvillevet.com)

681 Stewart Blvd.,  
Brockville, Ontario, K6V 5T4



LIKE US ON 

**facebook**



**DOWNLOAD**  
OUR NEW & FREE  
**MOBILE APP!**

**BROCKVILLEVET**



Revised edition: January, 2020

**BAH**pawplans  
PET ANNUAL WELLNESS

# Dental



**Schedule your pet's  
dental exam today!**

Our Dental plan provides your  
pets with oral health care at

**Low Monthly  
Payments!**



For a healthy body,  
your pet needs a healthy  
Mouth



<b><u>Our DENTAL PAW PLAN includes:</u></b>	<b>Cat</b>	<b>Dog</b>
A complete physical exam of your pet		
A nail trim		
General anesthetic with vital organ monitoring		
Intravenous catheter and fluid therapy		
Full mouth digital dental radiographs		
Probing and charting of teeth		
Scaling and polishing of teeth with fluoride		
Before and after photos of your pets teeth		
Post dental examination		
Initial payment on the day of the dentistry (HST for the plan)	\$60.26	\$64.54
Low monthly Installments (over 11 months) of	\$42.14	\$45.13

Please note that any dental extractions are not included in this plan and will be an additional cost on the day of the dentistry.

\* The first initial fee is the tax on the entire plan for the year. Payment charged on the 15th of each month for 11 months.